



Parthenocarpy in the Tomato (*Solanum lycopersicum* L.) Cultivar ‘MPK-1’ is Controlled by a Novel Parthenocarpic Gene

Rihito Takisawa^{1*}, Takayuki Maruyama¹, Tetsuya Nakazaki¹, Keiko Kataoka²,
Hiroki Saito¹, Sota Koeda³, Tsukasa Nunome⁴, Hiroyuki Fukuoka^{4**} and Akira Kitajima¹

¹Graduate School of Agriculture, Kyoto University, Kizugawa 619-0218, Japan

²Faculty of Agriculture, Ehime University, Matsuyama 790-8566, Japan

³Faculty of Agriculture, Kinki University, Nara 631-8505, Japan

⁴NARO Institute of Vegetable and Floriculture Science, Tsu 514-2392, Japan

Parthenocarpy is a trait where fruit set and growth are triggered without pollination and fertilization. In the tomato (*Solanum lycopersicum* L.), this trait is considered attractive as it reduces the cost and labor requirements for fruit setting. In this study, we investigated the inheritance of parthenocarpy in ‘MPK-1’—a parthenocarpic tomato cultivar derived from a cross between a variant from a self-fertilization posterity of ‘Severianin’, which exhibited strong parthenocarpy and a non-parthenocarpic cultivar. It was reported that ‘MPK-1’ contains a *pat-2* gene because ‘Severianin’ which has a *pat-2* gene is its only parthenocarpic ancestor. However, we found that parthenocarpy in ‘MPK-1’ is controlled by a novel parthenocarpic gene, not *pat-2*. This novel gene, which was designated as *Pat-k*, is semi-dominant and located on chromosome 1. We also showed that the size of the parthenocarpic fruit of ‘MPK-1’ is similar to that of the pollinated fruit at maturity. Thus, ‘MPK-1’ may be used as a new parthenocarpic resource for breeding.

Key Words: linkage analysis, parthenocarpic fruit development, *pat-2*, *Pat-k*.

Introduction

Fruit set and growth in the tomato are usually triggered by pollination and fertilization, as is the case for many other plants. Tomato flowers are self-pollinated when shaken by the wind or flower-visiting insects. However, in a greenhouse there is little wind and few flower visiting insects, resulting in unstable fruit set. Therefore, growth regulators such as synthetic auxins or bumblebees (*Bombus* spp.) are needed to stabilize the fruit set. However, the application of synthetic auxins incurs additional financial and labor costs to farmers, and can induce the development of malformed fruit under high-temperature conditions (Hosoki and Asahira, 1978). In contrast, the use of bumblebees results in the production of high-quality fruit (Velthuis and Van Doorn, 2006), but also incurs a high cost and

requires the maintenance of optimum temperatures to keep them active.

Parthenocarpy is a trait where fruit set and growth are triggered without pollination and fertilization. In the tomato, this trait is considered attractive as it reduces the financial and labor costs of fruit setting. There are currently five parthenocarpic tomato resources that are controlled by eight different parthenocarpic genes—‘Soressi’ and ‘Montfavet191’ (*pat*), ‘Severianin’ (*pat-2*), ‘RP75/59’ (*pat3/pat4*), ‘IL5-1’ (*pat4.1/pat5.1*), and ‘IVT-line1’ (*pat4.2/pat9.1*) (Gorguet et al., 2005, 2008). Genetic linkage maps have been constructed for five of these genes, *pat*, *pat4.1*, *pat4.2*, *pat5.1*, and *pat9.1* (Beraldi et al., 2004; Gorguet et al., 2008), and *pat-2* was recently mapped to chromosome 4 and found to encode a zinc finger homeodomain protein (Nunome et al., 2013).

The parthenocarpic cultivar ‘Severianin’, which has the *pat-2* gene, is a parthenocarpic tomato breeding resource used in Japan. Some parthenocarpic cultivars, such as ‘Renaissance’ (Sugahara et al., 2002), ‘Paruto’, and ‘House Paruto’ (SAKATA SEED CORPORATION, Japan) were developed using the *pat-2* gene and are commercially available. ‘MPK-1’ is a Japanese parthe-

Received; July 28, 2016. Accepted; January 10, 2017.

First Published Online in J-STAGE on March 3, 2017.

This work was supported by a Grant-in-Aid for Young Scientists (B) [15K18639] from the Japan Society for the Promotion of Science.

* Corresponding author (E-mail: takiawa@kais.kyoto-u.ac.jp).

** Present address: Takii Plant Breeding and Experiment Station, Konan 520-3231, Japan.

nocarpic tomato cultivar that is commercially cultivated in Kyoto, under the name 'Kyo-temari'. 'MPK-1' exhibits stable parthenocarpy and produces few seeds; therefore, the seedlings are vegetatively propagated from cuttings and lateral buds are taken from parent plants. Hosokawa et al. (2004) reported that 'MPK-1' was derived from a cross between a variant from a self-fertilization posterity of 'Severianin', which exhibited strong parthenocarpy and a non-parthenocarpic cultivar. It was reported that 'MPK-1' is a parthenocarpic tomato cultivar with the *pat-2* gene because 'Severianin' is its only parthenocarpic ancestor (Takisawa et al., 2012). However, seed formation in 'MPK-1' is severely inhibited and it has a very low seed germination rate (Takisawa et al., 2012), whereas 'Severianin' does not exhibit male or female sterility (Lin et al., 1983) and produces normal seeds through pollination. Thus, there are some differences between these two cultivars in terms of seed formation. Parthenocarpy in the tomato is reported to be strongly related to flower morphology and seed formation (Ampomah-Dwamena et al., 2002; Mazzucato et al., 1998). Therefore, 'MPK-1' may contain parthenocarpic gene(s) other than *pat-2*.

In this study, we performed genetic analyses to elucidate the parthenocarpic gene in 'MPK-1', and showed that 'MPK-1' has a novel parthenocarpic gene that is not *pat-2*. We also investigated the morphology of 'MPK-1' flowers and fruit to characterize this parthenocarpic gene.

Materials and Methods

Plant materials

For the genetic analyses, we developed a population of F_2 plants ($n = 98$) derived from a cross between the non-parthenocarpic tomato cultivar 'Micro-Tom' (Tomato Growers Supply Company, USA) and the parthenocarpic cultivar 'MPK-1'. For the progeny test, an F_3 line was developed from a single F_2 plant that was assumed to be heterozygous for parthenocarpy. Four cultivars were used for genotyping with polymerase chain reaction (PCR)-based markers for the *Pat-2* locus: the non-parthenocarpic cultivar 'Micro-Tom', and the parthenocarpic cultivars 'MPK-1', 'Severianin', and 'Renaissance'. 'MPK-1' was also used to examine the development of parthenocarpic and pollinated fruit.

Plant growth conditions

'MPK-1' cuttings were planted in a 128-cell tray filled with vermiculite and placed in a growth chamber (NK System, Japan) at 25°C under a 12-h photoperiod in July 28, 2013. Seeds of the F_2 population and 'Micro-Tom' were sown in August 3, 2013, and seeds of the F_3 population were sown in April 2, 2015. The seeds were sown in a 128-cell tray and placed in a greenhouse. The seedlings were transplanted into containers in a greenhouse in September 3, 2013 and May 3, 2015, respectively. Plants were grown in a green-

house on an Experimental Farm of Kyoto University, Takatsuki (34°51'N, 135°37'E) in autumn 2013 and spring 2015, respectively.

Characterization of parthenocarpy and fruit development

To evaluate the parthenocarpic phenotype, we observed the initial development of five flowers that had been emasculated a few days before anthesis. Based on this observation, the F_2 and F_3 plants were separated into the following three groups: no parthenocarpy—setting fruit but not growing fruit or dropping flowers; weak parthenocarpy—starting to grow fruit some days after anthesis; and strong parthenocarpy—starting to grow fruit before or at anthesis. All the mature fruits were checked for the absence of seeds.

We also compared the size of the parthenocarpic and pollinated fruit by measuring the diameter of 10 fruits at 0, 1, 2, 3, and 4 weeks post-anthesis, and at maturity with electronic calipers to evaluate the degree of parthenocarpy in 'MPK-1'.

DNA extraction

The young leaves were taken from the plants and were reserved in a freezer at -40°C. DNA was extracted from frozen leaves using a Nucleon PhytoPure kit (GE Healthcare, UK) according to the manufacturer's instructions with some minor modifications.

PCR-based marker analysis to differentiate *Pat-2* alleles

A PCR-based marker was used to distinguish between *Pat-2* alleles. The primers of the marker were designed using the sequence of the *Pat-2* locus: forward primer sequence (*Pat-2_fwd*), GGCATTAGGTGGTGGTAATGA; reverse primer sequence (*Pat-2_rev*), GATGAGTCTGTTGCCCCACT (Nunome et al., 2013). We used a PCR machine (TAKARA BIO INC, Japan) in all PCR experiments. PCR reactions were performed in a total volume of 10 μ L using BIOTAQ™ DNA polymerase (Bioline, UK) according to the manufacturer's instructions with some minor modifications. Amplification was carried out under the following conditions: 94°C for 5 min; 30 cycles of 94°C for 30 s, 58°C for 45 s, and 72°C for 30 s; and a final extension step at 72°C for 7 min. The PCR products were run on 1.0% agarose gels and stained with ethidium bromide.

Genomic sequence analysis of the *Pat-2* locus in 'MPK-1'

The *Pat-2* gene has been reported to correspond to a putative gene Solyc04g080490 in the International Tomato Annotation Group (ITAG) release 2.40. We determined the genome sequence of 'MPK-1' spanning 2550 nucleotides, corresponding to 64653386 to 64650837 of SL2.50ch04, which would include the entire sequence of the Solyc04g080490 gene. Four overlapping genome DNA fragments were amplified using four sets of primers (F1: AGAGGCGAGGTTCGAGTC

TAG and R1: ACCATCCGTAACATTTCCACCA; F2: GGCATTAGGTGGTGGTAA and R2: GATGAGTCTG TTGCCCCACT; F3: TACCTAACACGTTGGCGCT and R3: TCTTGACTCCAACCTGTGAGCA; F4: GT GGGGCAACAGACTCATCA and R4: TAAAGCGG CATCATGAGTGG). PCR reactions were performed in a total volume of 50 μ L using BIOTAQ™ DNA polymerase (Bioline) according to the manufacturer's instructions. Amplification was carried out under the following conditions: 94°C for 5 min; 35 cycles of 94°C for 30 s, 58°C for 1 min, and 72°C for 2 min; and a final extension step at 72°C for 7 min. The PCR products were run on 1.0% agarose gels and stained with ethidium bromide to confirm their amplification, after which they were purified with an EZ-10 Spin Column DNA Gel Extraction Kit (BioBasic Inc, Canada). Sequencing was performed by the FASMAC sequencing service (Fasmac, Japan).

Simple sequence repeat (SSR) marker analysis

Primer data for the SSR markers reported by Shirasawa et al. (2010) and Ohyama et al. (2009) were obtained from the Tomato Marker Database (<http://marker.kazusa.or.jp/Tomato/>) and VegMarks (<http://vegmarks.nivot.affrc.go.jp/>), respectively. In total, we used 670 SSR markers from the Tomato Marker Database and 212 SSR markers from VegMarks to detect polymorphisms between 'Micro-Tom' and 'MPK-1'. For the SSR markers from the Tomato Marker Database, the PCR reactions were performed in a total volume of 8 μ L using BIOTAQ™ DNA polymerase (Bioline) according to the manufacturer's instructions with some minor modifications. Amplification was carried out under the following conditions: 94°C for 5 min; 35 cycles of 94°C for 30 s, 58°C for 1 min, and 72°C for 2 min; and a final extension step at 72°C for 7 min. The PCR products were run on 12% polyacrylamide gels and stained with ethidium bromide. For the SSR markers from VegMarks, the PCR reactions were performed in a total volume of 6 μ L with a KAPA2G Fast Multiplex PCR Kit (Nippon Genetics, Japan) according to the manufacturer's instructions. Amplification was carried out under the following conditions: 94°C for 3 min; 30 cycles of 94°C for 20 s, 60°C for 30 s, and 72°C for 1 min; and a final extension step at 72°C for 10 min. Fragments were then amplified with fluorochrome-labeled primers (FAM, VIC, NED, and PET), diluted 200 times with water dissolved in formamide, and analyzed on an automated DNA sequencer (3730 DNA Analyzer; Applied Biosystems, USA) with a GeneScan™-500 LIZ® Size Standard (Applied Biosystems). Fragment length was determined using GeneMapper® software (Applied Biosystems).

Linkage analysis

Chi-square tests were performed to examine the

goodness of fit between the observed data and the expected Mendelian ratio for F_2 populations. Linkage analysis was performed using MAPMAKER ver. 3.0, with a minimum logarithm of odds likelihood score of 3.0 for an F_2 population (Lander, 1987). The linkage distance between the markers was calculated using the Kosambi mapping function (Kosambi, 1943), while linkage between the parthenocarpic phenotype and the SSR marker in the F_3 population was tested using chi-square tests.

Results

Analysis of the *Pat-2* locus in 'MPK-1'

The sequence of the *pat-2* allele of 'Severianin' was determined using the tomato line 'LS935', which is a genetic resource that was obtained by backcrossing 'Severianin' with 'Moneymaker' (Nunome et al., 2013). The open reading frame (ORF) region of the *Pat-2* locus in 'Heinz 1706' is 1651 bp in length (<https://solgenomics.net/>), whereas that of the *pat-2* allele of 'LS935' is 617 bp in length. This difference is due to the deletion of a 1034-bp fragment, which was detected by the *Pat-2*_fwd and *Pat-2*_rev primers. This primer set amplifies a 1351-bp fragment in the *Pat-2* allele and a 317-bp fragment in the *pat-2* allele. The amplified fragments of 'Severianin' and 'Renaissance' were detected at the same position as the *pat-2* fragment, whereas those of 'Micro-Tom' and 'MPK-1' were detected at the same position as the *Pat-2* fragment (Fig. 1). These results indicate that parthenocarp in 'MPK-1' is not caused by the *pat-2* allele of 'Severianin'. To investigate the existence of a small polymorphism, we determined the ORF sequence of the *Pat-2* locus in 'MPK-1' using the four sets of primers. This showed that the sequence in 'MPK-1' was identical to that in 'Heinz 1706'.

Segregation data for parthenocarp in the F_2 population

We conducted a segregation analysis for parthenocarp in 'MPK-1' using the F_2 population. The F_2 population was clearly classified into three groups—no parthenocarp, weak parthenocarp, and strong parthenocarp—according to the time at which the initial growth of unpollinated fruit occurred. Plants that ex-

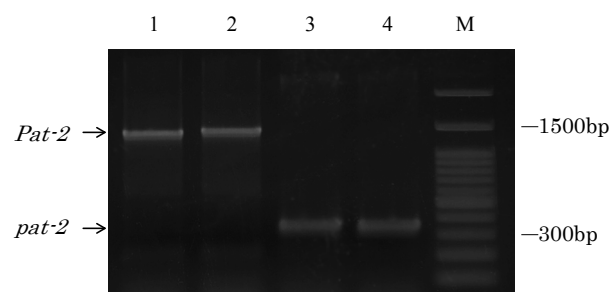


Fig. 1. Polymerase chain reaction-based *pat-2* genotyping. Lane: 1, 'Micro-Tom'; 2, 'MPK-1'; 3, 'Renaissance'; 4, 'Severianin'; M, 100-bp ladder.

Table 1. Polymorphisms of simple sequence repeat (SSR) markers between 'Micro-Tom' and 'MPK-1'.

Marker type	Number of SSR markers												Total
	Chromosome												
	1	2	3	4	5	6	7	8	9	10	11	12	
Polymorphic marker	9	9	9	9	2	3	2	3	0	3	6	8	63
Non-polymorphic marker	105	50	34	76	55	57	100	74	92	88	40	48	819
Total	114	59	43	85	57	60	102	77	92	91	46	56	882

Table 2. Linkage analysis of parthenocarpy with TGS0486, using the F₃ line derived from an F₂ plant with weak parthenocarpy that was heterozygous for the TGS0486 locus.

Genotype of TGS0486	Number of plants				Test of independence
	Total	Parthenocarpy		No parthenocarpy	
		Strong	Weak		
Micro-Tom homozygous	14	0	13	1	$\chi^2=41.7$ $P<0.01$
Heterozygous	26	1	23	2	
MPK-1 homozygous	8	8	0	0	

hibited no parthenocarpy, weak parthenocarpy, and strong parthenocarpy had a segregation ratio of 27:47:24, which was not significantly different from the expected 1:2:1 ratio ($\chi^2 = 0.35$, $P = 0.84$). This suggests that each of the three groups of parthenocarpic phenotypes may correspond to different allelic combinations on a single parthenocarpic locus.

Linkage analysis

We used 882 SSR markers to detect polymorphisms between 'Micro-Tom' and 'MPK-1', 63 of which revealed a polymorphism. These markers were distributed across all chromosomes except chromosome 9 (Table 1). A linkage map constructed from these 63 SSR markers covered 1461 cM, with an average linkage distance of 23 cM between markers. To determine the map location of the parthenocarpic locus in 'MPK-1', a linkage analysis was conducted using the genotype data for the 63 SSR markers and the parthenocarpic segregation data with MAPMAKER ver. 3.0. This showed that the parthenocarpic locus was linked to TGS0486, which is located on chromosome 1. The map distance between TGS0486 and the novel parthenocarpic locus was 28.22 cM.

We developed an F₃ population from an F₂ plant with weak parthenocarpy that was heterozygous for the TGS0486 locus to confirm that the parthenocarpic locus was linked to TGS0486. This resulted in 26 plants that were heterozygous, and 14 and 8 plants that were homozygous for the 'Micro-Tom' allele and the 'MPK-1' allele of the TGS0486 locus, respectively (Table 2). Among the heterozygous plants, 1 plant exhibited strong parthenocarpy, 23 plants exhibited weak parthenocarpy, and 2 plants exhibited no parthenocarpy. Among the plants that were homozygous for the 'Micro-Tom' allele, 13 plants exhibited weak parthenocarpy and 1 exhibited no parthenocarpy, whereas all

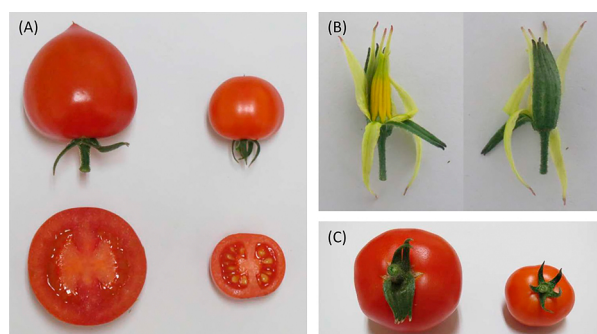


Fig. 2. The flowers and fruit of 'MPK-1' and 'Micro-Tom'. (A) Pollinated fruit of 'MPK-1' (left) and 'Micro-Tom' (right), (B) Flower of 'MPK-1' with fused sepals. The front side of the flower (left) and the back side of the flower (right), (C) Fruit of 'MPK-1' with fused sepals (left) and 'Micro-Tom' with separated sepals (right).

plants that were homozygous for the 'MPK-1' allele exhibited strong parthenocarpy. The linkage analysis for this F₃ population showed that the parthenocarpic gene was linked to TGS0486.

Fruit and flower morphology, and fruit development

The fruit of 'MPK-1' contain few seeds, even when the flowers are sufficiently pollinated (Fig. 2A). In most 'MPK-1' flowers (Fig. 2B), the sepals are fused making it difficult for the petals to open completely at anthesis, and the fused sepals are still observed at the time of harvest (Fig. 2C). The mean diameter of the parthenocarpic fruit was slightly shorter than that of the pollinated fruit between 1 and 3 weeks post-anthesis; however, the fruit were similar in size at 4 weeks post-anthesis and at maturity (Fig. 3).

Discussion

In this study, we investigated the gene that controls

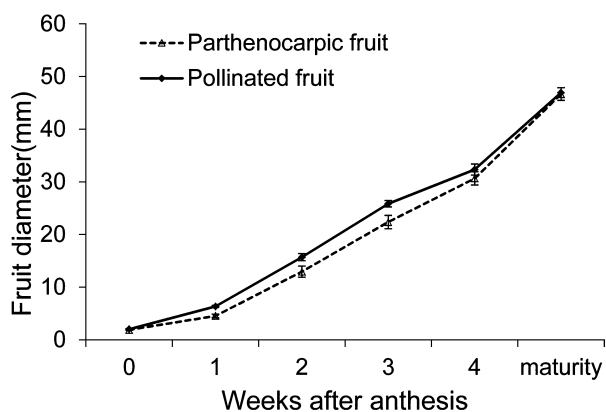


Fig. 3. The development of pollinated fruit and parthenocarpic fruit in 'MPK-1'. Values are means of 8–10 fruit \pm SE.

parthenocarpy in the tomato cultivar 'MPK-1'. Initially, we analyzed the *Pat-2* locus using a PCR-based marker with the cultivars 'MPK-1', 'Severianin', 'Renaissance', and 'Micro-Tom'. We found that the amplified fragments of 'Severianin' and 'Renaissance' were detected at the same position as the *pat-2* fragment, whereas the amplified fragment of 'MPK-1' was detected at the same position as the *Pat-2* fragment (Fig. 1). In addition, we found that the ORF sequence of *Pat-2* locus in 'MPK-1' was identical to that of 'Heinz 1706'. These results suggest that parthenocarpy in 'MPK-1' is not controlled by the *pat-2* allele but by some other unknown parthenocarpic gene (Table 2).

The segregation ratio of plants exhibiting no parthenocarpy, weak parthenocarpy, and strong parthenocarpy in the F_2 population fitted a 1:2:1 ratio, indicating that the parthenocarpic gene of 'MPK-1' is semi-dominant. A linkage analysis of the F_2 population showed that the parthenocarpic gene is located on chromosome 1, at a distance of 28.22 cM from the nearest SSR marker, TGS0486. A linkage analysis of the F_3 population confirmed that TGS0486 is linked to the parthenocarpic gene. However, the segregation ratio of plants exhibiting no parthenocarpy, weak parthenocarpy, and strong parthenocarpy in the F_3 population did not fit a 1:2:1 ratio because 13 of the 14 F_3 plants that were homozygous for the 'Micro-Tom' allele exhibited weak parthenocarpy, with only one having no parthenocarpy. The F_2 plants were grown from September to November, whereas the F_3 plants were grown from May to July, resulting in the growth temperature of the F_3 plants being higher than that of the F_2 plants. Parthenocarpy is enhanced by high temperatures in the tomato (Sato et al., 2001); therefore, it is possible that the high temperature caused weak parthenocarpy in the F_3 plants that were homozygous for the 'Micro-Tom' allele. On the other hand, it is reported that the expression of parthenocarpy in 'Severianin' is affected by not only *pat-2*, but also some other factors. Lin et al. (1984) reported that the expression of parthenocarpy in 'Severianin' is associ-

ated with a determinate growth habit and/or earliness, and Vardy et al. (1989) reported that the minor gene, *mp*, influences the expression of *pat-2* in 'Severianin'. Thus, the parthenocarpy of 'MPK-1' may also be affected by minor factors, leading to weak parthenocarpy in the F_3 plants that were homozygous for the 'Micro-Tom' allele. However, all F_3 plants that were homozygous for the 'MPK-1' allele exhibited strong parthenocarpy, indicating that the major gene that causes parthenocarpy in 'MPK-1' is located near TGS0486.

It has previously been reported that *pat* is localized on the long arm of chromosome 3; *pat-2*, *pat4.1*, and *pat4.2* are localized on chromosome 4; *pat5.1* is localized on chromosome 5; and *pat9.1* is localized on chromosome 9 (Beraldi et al., 2004; Gorguet et al., 2008; Nunome et al., 2013). Therefore, this is the first report of a parthenocarpic gene on chromosome 1 in the tomato. It has also been reported that the flowers of 'RP75/59', which contain *pat3/pat4*, need to be emasculated to obtain seedless fruit (Gorguet et al., 2005). However, in 'MPK-1', seed formation was extremely inhibited even when the flowers were sufficiently pollinated. Therefore, it is assumed that the parthenocarpic gene of 'MPK-1' is different from *pat-3/pat-4*. Vardy et al. (1989) previously hypothesized that two recessive genes, *pat-2* and *mp*, are involved in the expression of parthenocarpy in 'Severianin', and that *mp* influences the expression of *pat-2* when it is in the homozygous form. However, the parthenocarpic gene of 'MPK-1' induced strong parthenocarpy by itself, so it is assumed that the parthenocarpic gene of 'MPK-1' is different from *mp*. Based on these findings, it can be concluded that the parthenocarpic gene of 'MPK-1' is a novel parthenocarpic gene. Consequently, we designated this novel parthenocarpic gene *Pat-k*. Lin et al. (1984) reported that the expression of parthenocarpy among nine lines of 'Severianin' varied significantly in winter cultivation. This may show that there are several parthenocarpic lines in 'Severianin'. There are two possibilities in terms of the origin of *Pat-k*. First, 'Severianin', which was used as the parent of 'MPK-1', had *pat-2* and *Pat-k*, and we identified one of them. Second, the parthenocarpic line having not *pat-2*, but *Pat-k*, among several parthenocarpic lines of 'Severianin' was used as the parent of 'MPK-1'. 'Severianin', which was used as the parent of 'MPK-1', has been lost. Therefore, we currently cannot clarify where *Pat-k* is from. Isolation of *Pat-k* may lead to clarification of where this gene is derived from.

In *pat* tomato mutants, there are partial aberrations of the stamens and ovules, and fertilization is strongly inhibited even where the ovules appear normal due to abnormalities in the pollen tube–ovary interaction (Mazzucato et al., 1998, 2003), indicating that *pat* may result from the mutation of a putative gene with homeotic functions. *SEPATALA* (*SEP*) is a MADS box gene

that interacts with other MADS box genes to control the development of each floral whorl in *Arabidopsis*. Ampomah-Dwamena et al. (2002) showed that constitutive downregulation of a *SEP* homolog from a tomato, *Tomato MADS-box 29 (TM29)*, results in homeotic conversion and pistil infertility, coupled with parthenocarpic fruit formation. It has previously been reported that *pat-2* is a zinc finger homeodomain protein (ZF-HD) gene (Nunome et al., 2013), and Tan and Irish (2006) proposed that this gene family encodes a group of transcriptional regulators with unique biochemical activities that play overlapping regulatory roles in *Arabidopsis* floral development. In the present study, we found that the sepals of 'MPK-1' were fused, making it difficult for the petals to open completely at anthesis, and the fused sepals were still observed when the fruit were harvested. Fused sepals and the inhibition of seed formation were also observed in the breeding lines derived from 'MPK-1' and the F₃ population, which exhibited strong parthenocarp. In addition, it has previously been reported that seed formation in 'MPK-1' is extremely inhibited and that many ovules have abnormal micropyles (Kataoka et al., 2004; Takisawa et al., 2012). Thus, *Pat-k* appears to have some homeotic function and the inhibition of seed formation may be caused by genetic pleiotropy of *Pat-k*.

In the parthenocarpic cultivar 'Renaissance', which has the *pat-2* gene, the parthenocarpic fruit weighs as much as pollinated fruit at maturity (Ohkawa et al., 2007). We also found that the parthenocarpic fruit of 'MPK-1' were similar in size to the pollinated fruit at maturity, which indicates that the *Pat-k* gene exhibits practical parthenocarp. Thus, 'MPK-1' may be used as a new parthenocarpic resource for breeding.

In this study, we identified the novel parthenocarpic gene *Pat-k* in the tomato cultivar 'MPK-1', which may be valuable for the breeding of parthenocarpic tomato varieties. Furthermore, the isolation of *Pat-k* will increase our understanding of the parthenocarpic mechanism.

Literature Cited

- Ampomah-Dwamena, C., B. A. Morris, P. Sutherland, B. Veit and J. L. Yao. 2002. Down-regulation of *TM29*, a tomato *SEPALATA* homolog, causes parthenocarpic fruit development and floral reversion. *Plant Physiol.* 130: 605–617.
- Beraldi, D., M. E. Picarella, G. P. Soressi and A. Mazzucato. 2004. Fine mapping of the parthenocarpic fruit (*pat*) mutation in tomato. *Theor. Appl. Genet.* 108: 209–216.
- Gorguet, B., P. M. Eggink, J. Ocana, A. Tiwari, D. Schipper, R. Finkers, R. G. Visser and A. W. van Heusden. 2008. Mapping and characterization of novel parthenocarp QTLs in tomato. *Theor. Appl. Genet.* 116: 755–767.
- Gorguet, B., A. W. van Heusden and P. Lindhout. 2005. Parthenocarpic fruit development in tomato. *Plant Biol.* 7: 131–139.
- Hosokawa, M., S. Matsumura, T. Hayashi and S. Yazawa. 2004. Plant regeneration of stable parthenocarpic tomato cultivars from shoot apical meristems attached to root tips. *Jpn. J. Taste Smell Res.* 11: 61–68.
- Hosoki, T. and T. Asahira. 1978. In vitro studies of controlling tomato puffiness enhanced by temperature, nitrogen source and sucrose concentration. *Sci. Hortic.* 9: 295–302.
- Kataoka, K., H. Okita, A. Uemachi and S. Yazawa. 2004. A pseudoembryo highly stainable with toluidine blue O may induce fruit growth of parthenocarpic tomato. *Acta Hortic.* 637: 213–221.
- Kosambi, D. 1943. The estimation of map distances from recombination values. *Ann. Eugen.* 12: 172–175.
- Lander, E. S. 1987. MAPMAKER: An interactive computer package for constructing primary genetic linkage maps of experimental and natural populations. *Genomics* 1: 174–181.
- Lin, S., W. Splittstoesser and W. George. 1983. Factors controlling the expression of parthenocarp in 'Severianin' tomato. *Sci. Hortic.* 19: 45–53.
- Lin, S., W. Splittstoesser and W. George. 1984. Expression and inheritance of parthenocarp in 'Severianin' tomato. *J. Hered.* 75: 62–66.
- Mazzucato, A., I. Olimpieri, F. Ciampolini, M. Cresti and G. P. Soressi. 2003. A defective pollen-pistil interaction contributes to hamper seed set in the parthenocarpic fruit tomato mutant. *Sex Plant Reprod.* 16: 157–164.
- Mazzucato, A., A. R. Taddei and G. P. Soressi. 1998. The parthenocarpic fruit (*pat*) mutant of tomato (*Lycopersicon esculentum* Mill.) sets seedless fruits and has aberrant anther and ovule development. *Development* 125: 107–114.
- Nunome, T., I. Honda, A. Ohyama, H. Fukuoka, H. Yamaguchi and K. Miyatake. 2013. Parthenocarp regulation gene and use thereof. Patent WO 2014021398 A1.
- Ohkawa, H., S. Sugahara, T. Oyabu, M. Takaichi and K. Yabe. 2007. Effects of high and low temperature conditions on the fruit setting and growth of the parthenocarpic tomato 'Renaissance'. *Hort. Res. (Japan)* 6: 449–454 (In Japanese with English abstract).
- Ohyama, A., E. Asamizu, S. Negoro, K. Miyatake and H. Yamaguchi. 2009. Characterization of tomato SSR markers developed using BAC-end and cDNA sequences from genome databases. *Mol. Breed.* 23: 685–691.
- Sato, S., M. Peet and R. Gardner. 2001. Formation of parthenocarpic fruit, undeveloped flowers and aborted flowers in tomato under moderately elevated temperatures. *Sci. Hortic.* 90: 243–254.
- Shirasawa, K., E. Asamizu, H. Fukuoka, A. Ohyama, S. Sato, Y. Nakamura, S. Tabata, S. Sasamoto, T. Wada, Y. Kishida, H. Tsuruoka, T. Fujishiro, M. Yamada and S. Isobe. 2010. An interspecific linkage map of SSR and intronic polymorphism markers in tomato. *Theor. Appl. Genet.* 121: 731–739.
- Sugahara, S., S. Enomoto, T. Oyabu, Y. Yabe and H. Noguchi. 2002. Breeding of parthenocarpic tomato cultivar 'Renaissance'. *Res. Bull. Aichi. Agric. Res. CTR.* 34: 37–42.
- Takisawa, R., K. Kataoka and A. Kitajima. 2012. Inhibition of seed formation by anomalous ovule in 'Kyo-temari', a parthenocarpic tomato (*Solanum lycopersicum* L.) cultivar. *J. Japan. Soc. Hort. Sci.* 81: 251–256.
- Tan, Q. K. and V. F. Irish. 2006. The *Arabidopsis* zinc finger-homeodomain genes encode proteins with unique biochemical properties that are coordinately expressed during floral development. *Plant Physiol.* 140: 1095–1108.
- Vardy, E., D. Lapushner, A. Genizi and J. Hewitt. 1989. Genetics of parthenocarp in tomato under a low temperature regime: II. Cultivar 'Severianin'. *Euphytica* 41: 9–15.
- Velthuis, H. H. W. and A. Van Doorn. 2006. A century of advances in bumblebee domestication and the economic and environmental aspects of its commercialization for pollination. *Apidologie* 37: 421–451.